

MONTHLY MEMBERSHIP PROGRESS REPORT

District 201V5

Results as of: 6/30/2024

GMT:

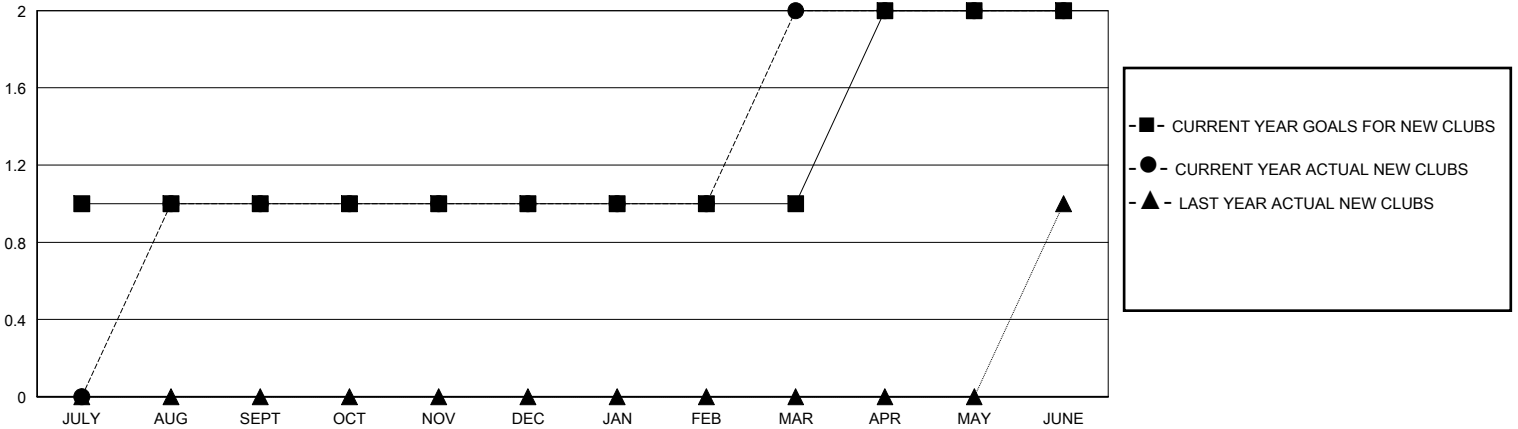
LOCATION AUSTRALIA

GMT CA

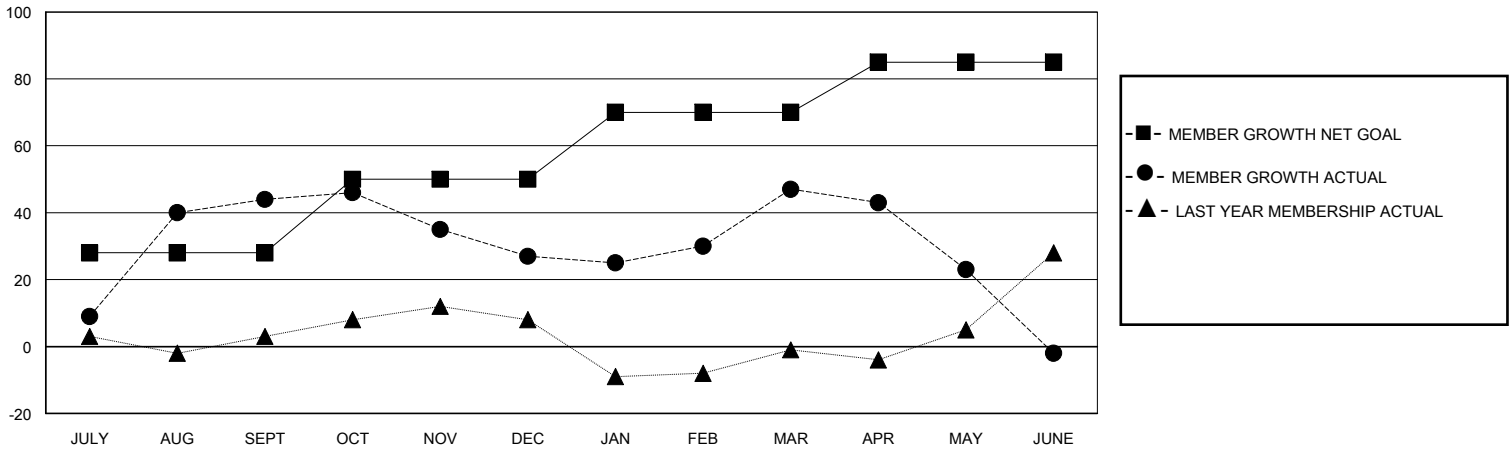
Clubs			
RESULTS FOR 2023-2024			
QUARTER	NEW CLUB GOAL	NEW CLUBS	DROPPED CLUBS
JULY/AUG/SEPT	1	1	1
OCT/NOV/DEC	0	0	0
JAN/FEB/MAR	0	1	0
APR/MAY/JUNE	1	0	0

Members			
RESULTS FOR 2023-2024			
QUARTER	MEMBER GROWTH NET GOAL	MEMBER GROWTH ACTUAL	DROPPED MEMBERS ACTUAL (including transfers)
JULY/AUG/SEPT	28	79	31
OCT/NOV/DEC	22	27	41
JAN/FEB/MAR	20	54	29
APR/MAY/JUNE	15	22	68

GOALS AND ACTUAL NEW CLUBS CUMULATIVE



GOALS AND ACTUAL MEMBERS CUMULATIVE



DROPPED CLUBS: 1

43 CLUBS OF 67 ADDED 1 OR MORE NEW MEMBERS

GENDER DISTRIBUTION

MALE 773 (62.49%)
FEMALE 457 (36.94%)

DROPPED MEMBERS

DECEASED	15
CLUB CANCELLED	0
OTHER	154
TOTAL	169

[CLICK HERE FOR CUMULATIVE MEMBERSHIP DATA](#)

TOTAL FAMILY UNIT MEMBERS	140
FAMILY MEMBERS PAYING HALF DUES	73